



Mainstar MXI

R.P. Shannon
Rocket Software, Inc.
617-614-2105
bshannon@rs.com

Session 8695
Anaheim, CA
March 1, 2011

Overview



Light weight, comprehensive toolkit

Available as a download; not distributed on tape

Additional functionality, e.g. DB2, TCP/IP, CICS, etc. available as priced plug-ins

All fields from all displays are available as Rexx variables

Optional GUI provides different look, feel, and capability

Day 1 support for z/OS and major subsystems (CICS, DB2, etc.)

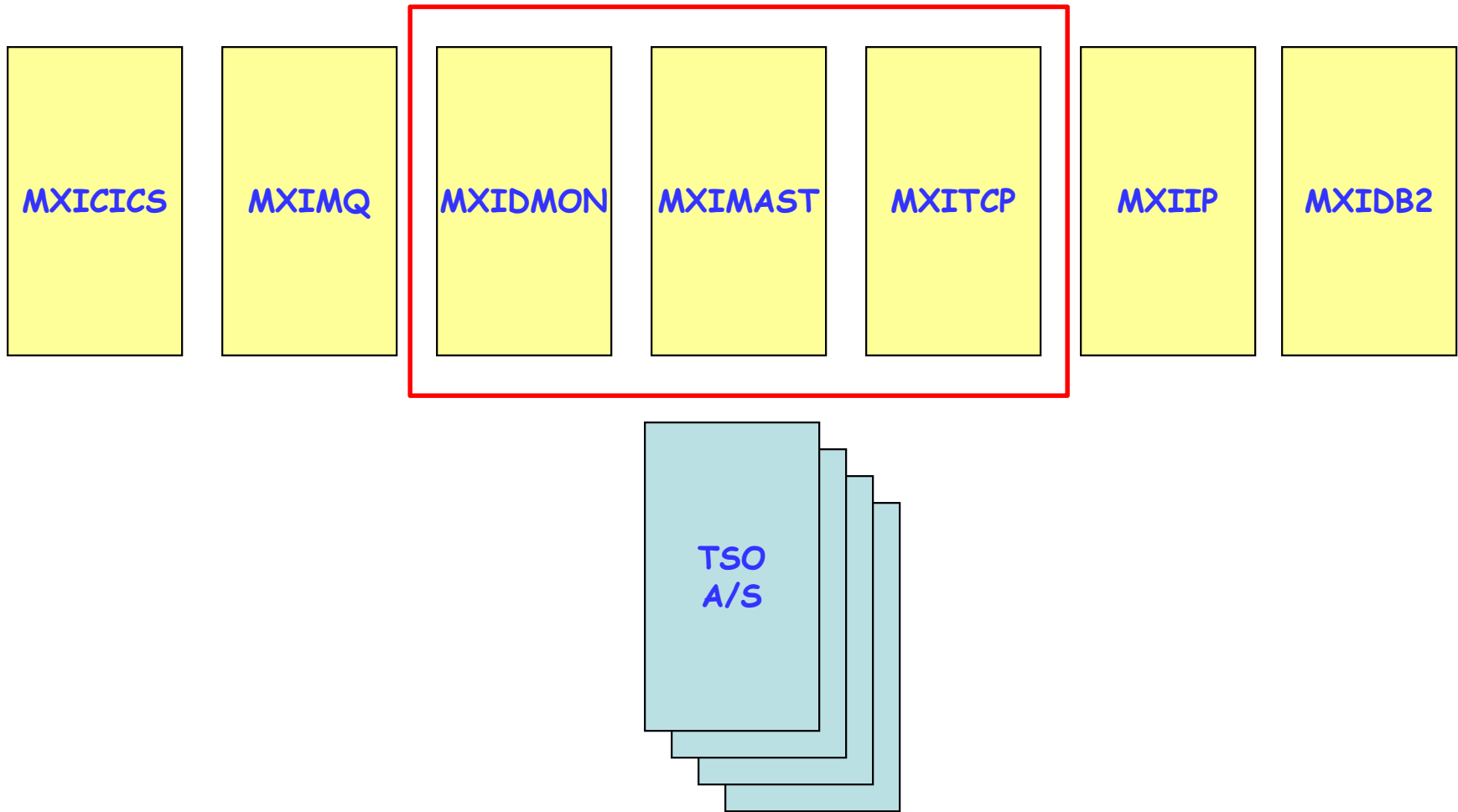
Screenshots via BlueZone emulator

Contact Terri Bonee (tbonee@RS.com) for additional information

Father/Creator – Rob Scott



MXI Architecture



Multi-system Support



MXI can consolidate system displays via TCP/IP

All MXI commands can be issued to any system

All operator commands can be issued to every connected system

Multi-system Support

S3 - RL01 - RL01 - BlueZone Mainframe Display

File Edit Session Options Transfer View Macro Script Help

Attention PA1 PA2 PA3 Reset PF01 PF02 PF03 PF04 PF05 PF06 PF07 PF08 PF12 System Request

Connections: RL01

File Plugin Dataset Module Unit System Sysplex SMS Storage WLM

MXI--SYS--RL01-----HOME-----CPU 1 UIC 65534 PAG 152-----=>-Row 00001 of 00012

Command ==> _____ Scroll ==> **PAGE**

System =*

Cmd	System	Status	OSLevel	CPU%	Aux%	CSA%	SQA%	ECSA%	ESQA%	UIC	Spool
	RL01	Active	z/OS 01.11	1	25	20	14	56	64	65534	1
	RL02	Active	z/OS 01.10	4	0	11	13	24	51	65535	1
	RL11	TimeOut									
	RL12	TimeOut									
	RL13	Active	z/OS 01.09	8	6	7	11	30	68	65535	1
	RL30	Active	z/OS 01.09	6	37	8	12	18	67	65535	5
	RL31	Active	z/OS 01.10	7	25	8	12	17	67	65535	5
	RL32	Active	z/OS 01.11	22	34	8	12	17	69	65535	5
	RS21	Active	z/OS 01.11	1	15	11	28	13	17	65535	2
	RS22	Active	z/OS 01.11	2	34	43	38	79	24	65535	2
	RS23	Active	z/OS 01.10	3	36	36	33	52	20	65535	2
	RS25	Active	z/OS 01.11	11	38	40	35	73	23	18899	2

ASID 00EC (PDSHAN) DB2(DSN1) 2010/07/22 22.54.51

start 5 11 9 B... 3 C... C... M... S... 100% 12:53 PM

Multi-system Definitions

* -----

* TCPIP Remote Sites

* -----

Site=Name(RL01),Address(rl01.rocketsoftware.com)

Site=Name(RL02),Address(rl02.rocketsoftware.com)

Site=Name(RL11),Address(rl11.rocketsoftware.com)

Site=Name(RL12),Address(rl12.rocketsoftware.com)

Site=Name(RL13),Address(rl13.rocketsoftware.com)

Site=Name(RL30),Address(rl30.rocketsoftware.com)

Site=Name(RL31),Address(rl31.rocketsoftware.com)

Site=Name(RL32),Address(rl32.rocketsoftware.com)

Site=Name(RS21),Address(rs21.rocketsoftware.com)

Site=Name(RS22),Address(rs22.rocketsoftware.com)

Site=Name(RS23),Address(rs23.rocketsoftware.com)

Site=Name(RS25),Address(rs25.rocketsoftware.com)

Enhancements to IBM Commands



Many MXI functions are already available from IBM

However, MXI provides additional value by making displays sortable

Definitely better than manually parsing the IBM displays

Assists in using the correct syntax for commands issued infrequently

Sorted APF Library Display

S1 - RS21 - RS21 - BlueZone Mainframe Display

File Edit Session Options Transfer View Macro Script Help

Connections: RS21

Attention PA1 PA2 PA3 Reset PF01 PF02 PF03 PF04 PF05 PF06 PF07 PF08 PF12 System Request

```

File  PlugIn  Dataset  Module  Unit  system  sysplex  SMS  storage  WLM
MXI--APF--RS21-----HOME-----CPU   3 UIC 65534 PAG   0-----=>-Row 00027 of 00244
Command ==>
Dataset  =*
Extents  512
Cmd  Dataset                                Volser  Status  BlkSize  Ext
-----
TSM.PR00110.LOADLIB                          Migrated
TSM.MNT0110.LOADLIB                          DVP114  OK      32760    1
TCPIP.SEZATCP                                RZ111A  OK      32760    3
TCPIP.SEZALPA                                RZ111A  OK      32760    1
TCPIP.SEZALNK2                               RZ111A  OK      32760    1
TCPIP.SEZADSIL                               RZ111A  OK      32760    1
TA1A.SDSNEXIT                                DBP150  OK       6233    1
SYS1.VTAMLIB                                 RZ111A  OK      32760    4
SYS1.SVCLIB                                  RZ111A  OK      32760    1
SYS1.SISTCLIB                                RZ111A  OK      32760    1
SYS1.SHASMIG                                 RZ111A  OK      32760    1
SYS1.SHASLNKE                                RZ111A  OK      32760    1
SYS1.SERBLINK                                RZ111A  OK      32760    1
SYS1.SBDTLIB                                 RZ111A  OK      32760    1
SYS1.SBDTCMD                                RZ111A  OK      32760    1
SYS1.NFSLIBE                                 RZ111A  OK      32760    1
*MXIG2
  
```

S1 Ready (1) 192.168.55.21 S21TCP06 8:26:44 7/26/2010 NUM 02:01:46 04.015

start 31 21 71 Bl... C... C... 2. M... 100% 8:26 AM

DA Command and Sub-commands

S1 - RS21 - RS21 - BlueZone Mainframe Display

File Edit Session Options Transfer View Macro Script Help

Connections: RS21

Attention PA1 PA2 PA3 Reset PF01 PF02 PF03 PF04 PF05 PF06 PF07 PF08 PF12 System Request

```

File  PlugIn  Dataset  Module  Unit  System  Sysplex  SMS  Storage  WLM
-----
MXI--DA---RS2
Command ===>
Jobname  =*
Maxuser  1605
Cmd      Jobname
MXIIP
MXIMAST
MXITCP
?  NFSC
OAM
OMVS
OSNMPD
PCAUTH
PDBATE
PDFLYN
PDLOU
PDSHAN
PORTMAP
Q7D2DBM1
Q7D2DIST  Q7D2DIST  IEFPROC  S0006854  007F  N/S      643
Q7D2IRLM  Q7D2IRLM   S0006852  007D  N/S     20747
*MXIG2
  
```

Command ===> _____ Row 1 to 15 of 26

S Command Description

- AX Auth Indexes Owned By ASID
- C Cancel Address Space
- CDE CDE And JPAQ Entries
- CS Common Storage Usage
- CT Cancel TSO User
- DDNS Allocated Datasets
- DSP Dataspaces Owned By ASID
- ENQ Enqueues Held By ASID
- GQE Common Storage GQEs
- KILL Kill Address Space
- LX Linkage Indexes Owned By ASID
- MOBJ Memory Objects For ASID
- NTOK Name/Token Pairs Owned By ASID
- P Stop Address Space
- PC Stop CICS Region

SIO	CPU%
0	0.02
0	0.12
0	0.01
0	0.00
0	0.00
0	0.00
0	0.00
0	0.00
0	0.00
0	0.00
0	0.00
1	0.01
0	0.00
0	0.00
0	0.00

S1 Ready (1) 192.168.55.21 S21TCP06 8:24:06 7/26/2010 NUM 01:59:08 03.031

start 31 21 71 Bl... 31 C... C... 2. M... 100% 8:24 AM

RACF Feature



Included in base product

Displays are formatted much better than standard RACF displays

Action commands available to manage profiles

In our shop system programmers are the RACF administrators so we use this feature

RACF Dataset Display

S1 - RS21 - RS21 - BlueZone Mainframe Display

File Edit Session Options Transfer View Macro Script Help

Connections: RS21 Attention PA1 PA2 PA3 Reset PF01 PF02 PF03 PF04 PF05 PF06 PF07 PF08 PF12 System Request

File PlugIn General Dataset User Group

MXI--RL---RS21-----HOME-----CPU 22 UIC 65534 PAG 0-----=>-Row 00001 of 01565
 Command ==> scroll ==> PAGE

Profile *
 Class DATASET Detail Y search N

Cmd	Profile	Owner	UACC	Acclist	War
	ABP.*.**	SYS1	None	11	No
	ABP.HLD*.*.**	SYS1	None	8	No
	ABP.MNT0110.*.**	SYS1	None	8	No
	ABP.MNT0210.*.**	SYS1	None	8	No
	ABP.PRD0110.*.**	SYS1	None	7	No
	ABP.PRD0210.*.**	SYS1	None	7	No
	ABP.PTF.*.**	PDBATE	None	7	No
	ABP.QA.*.**	PDBATE	None	2	No
	ABP.QATEST.*.**	PDBATE	None	2	No
	ABP.V*.S*.%K*.*.	SYS1	None	6	No
	ABP.V*.S*.%M*.*.	SYS1	None	7	No
	ABP.V*.S*.%Q*.*.	SYS1	None	5	No
	ABPPRPQ.*.**	SYS1	None	6	No
	ABX.*.**	SYS1	None	18	No
	ABX.*.ASM*.*.	SYS1	None	11	No
	ABX.*.MACLIB*.*.	SYS1	None	11	No

*MXIG2

S1 Ready (1) 192.168.55.21 S21TCP06 8:21:36 7/26/2010 NUM 01:56:38 04.015

start 31 21 71 Bl... C... C... 2. M... 100% 8:21 AM

RACF Action Commands

S1 - RS21 - RS21 - BlueZone Mainframe Display

File Edit Session Options Transfer View Macro Script Help

Connections: RS21

Attention PA1 PA2 PA3 Reset PF01 PF02 PF03 PF04 PF05 PF06 PF07 PF08 PF12 System Request

```

File  PlugIn  General  Dataset  User  Group
-----
MXI--RL---RS2
Command ==>
Profile *
Class DATA
Cmd Profile
  ABP.*.**
  ABP.HLD*
  ABP.MNT0
  ABP.MNT0
  ? ABP.PRD0
  ABP.PRD0
  ABP.PTF.
  ABP.QA.*
  ABP.QATE
  ABP.V*.S
  ABP.V*.S
  ABP.V*.S
  ABPPRPQ.
  ABX.*.**
  ABX.*.ASM*.**
  ABX.*.MACLIB*.**
  *MXIG2
  
```

MXI - Select Command

Command ==> _____ Row 1 to 8 of 8

S	Command	Description	AcCList	War
—	A	Maintain Access List		
—	C	Change Profile		
—	D	Delete Profile		
—	I	Insert New Profile	11	No
—	PW	Change Password For Userid	8	No
—	RCLS	RACF Class Information	8	No
—	RLL	RACF Profile Access List	7	No
—	S	RACF Profile Information	7	No
			7	No
			2	No
			2	No
			6	No
			7	No
			5	No
			6	No
			18	No
		SYS1	11	No
		SYS1	11	No
		None		
		None		

01 of 01565
==> PAGE

S1 | Ready (1) | 192.168.55.21 | S21TCP06 | 8:22:34 7/26/2010 | NUM | 01:57:36 | 03.031

start | 31 | 21 | 71 | Bl... | 31 | C... | C... | 2... | M... | 100% | 8:22 AM

VI CSV – Create a CSV File for Download

The screenshot shows a mainframe terminal window titled "S1 - RS21 - RS21 - BlueZone Mainframe Display". The window contains a menu bar with options like File, Edit, Session, Options, Transfer, View, Macro, Script, and Help. Below the menu bar is a toolbar with various icons. The main display area shows a command prompt with the following text:

```

VIEW          MXI.DASD.RS21.HOME          columns 00001 00072
Command ==>          scroll ==> PAGE
***** ***** Top of Data *****
==MSG> -warning- The UNDO command is not available until you change
==MSG>          your edit profile using the command RECOVERY ON.
000001  Cmd  Volser Unit DevType  Capacity  FreeTrk  LargeTrk  FreeCyl  LargeCyl
000002  DTP10B 0B00 3390-9    150255   100197   22305    6639     1487
000003  S1P107 0B01 3390-9    150300    8571     368      487      24
000004  OMP100 0B02 3390-9    150255   111863   60491    7434    4032
000005  DLE171 0B03 3390-9    150255    49498   49497    3299    3299
000006  S1P10B 0B05 3390-9    150300    17447    1687    1058     112
000007  S1P10E 0B06 3390-9    150300    17189    2688    1065     179
000008  DBB010 0B07 3390-9    150255   148960   148170   9930    9878
000009  DBB011 0B08 3390-9    150255   149758   149758   9983    9983
000010  R3P104 0B09 3390-9    150255    21038    1920    1295     128
000011  R2P102 0B0C 3390-3     50085    13364    6005     885     400
000012  X30B0D 0B0D 3390-3     50100     0         0         0         0
000013  X30B0E 0B0E 3390-3     50085     0         0         0         0
000014  X30B0F 0B0F 3390-3     50085     0         0         0         0
000015  X30B10 0B10 3390-3     50085     0         0         0         0
000016  X30B11 0B11 3390-3     50085     0         0         0         0
*MXIG2
  
```

The table below represents the data shown in the terminal window:

Cmd	Volser	Unit	DevType	Capacity	FreeTrk	LargeTrk	FreeCyl	LargeCyl
DTP10B	0B00	3390-9	150255	100197	22305	6639	1487	
S1P107	0B01	3390-9	150300	8571	368	487	24	
OMP100	0B02	3390-9	150255	111863	60491	7434	4032	
DLE171	0B03	3390-9	150255	49498	49497	3299	3299	
S1P10B	0B05	3390-9	150300	17447	1687	1058	112	
S1P10E	0B06	3390-9	150300	17189	2688	1065	179	
DBB010	0B07	3390-9	150255	148960	148170	9930	9878	
DBB011	0B08	3390-9	150255	149758	149758	9983	9983	
R3P104	0B09	3390-9	150255	21038	1920	1295	128	
R2P102	0B0C	3390-3	50085	13364	6005	885	400	
X30B0D	0B0D	3390-3	50100	0	0	0	0	
X30B0E	0B0E	3390-3	50085	0	0	0	0	
X30B0F	0B0F	3390-3	50085	0	0	0	0	
X30B10	0B10	3390-3	50085	0	0	0	0	
X30B11	0B11	3390-3	50085	0	0	0	0	

The terminal window also shows a status bar at the bottom with information like "S1", "Ready (1)", "192.168.55.21", "S21TCP06", "8:20:13 7/26/2010", "NUM", "01:55:15", and "04.015".

zFS Information

RS22

File Edit Session Options Transfer View Macro Script Help

File PlugIn Dataset Module Unit System Sysplex SMS Storage WLM

MXI--HFS--RS22-----HOME-----CPU 4 UIC 65535 PAG 0----- Start Of Row

Path =*

Cmd	Path	Dataset	System	UsedBlk%	FSType	Mode
	/	RSPLEX01.HFS.ROOT	RS21	75.55	HFS	RW
	/service	RSPLEX01.SERVICE.HFS	RS21	12.35	HFS	RW
	/service/rsusr/db2	DSM.DB2SMPE.HFS	RS22	3.04	HFS	RW
	/service/rsusr/db2/db2a10	DSNA10.SDSNHFS	RS23	75.72	HFS	RW
	/tools_common	STSCOMM	RS21	58.04	NFS	RW
	/RS22	RSHFS.RS22.HFS	RS22	7.22	HFS	RW
	/RS22/dev	RSHFS.RS22.DEV	RS22	13.82	HFS	RW
	/RS22/etc	RSHFS.RS22.ETC	RS22	98.36	HFS	RW
	/RS22/tmp	/TMPRS22	RS22	0.08	TFS	RW
	/RS22/var	RSHFS.RS22.UAR	RS22	32.31	HFS	RW
	/RS22/var/wbem	RSZFS.RS22.UARWBEM.ZFS	RS21	17.93	ZFS	RW
	/mvs cvs	CUSHOME	RS21	63.76	NFS	RW
	/tools	STSHOME	RS23	58.04	NFS	RW
	/proj	*AMD/proj	RS21	100.00	AUTOMNT	RW
	/proj/cqm22	RSHFSDEV.PROJ.CQM22	RS25	69.50	HFS	RW
	/proj/CWQ	RSHFSDEV.PROJ.CWQ	RS22	63.92	HFS	RW
	/proj/AJC	RSZFS.AJC.ZFS	RS22	62.04	ZFS	RW
	/proj/aspp	RSHFSDEV.PROJ.ASPP	RS22	85.55	HFS	RW
	/proj/DBCure	RSHFSDEV.PROJ.DBCURE	RS22	81.94	HFS	RW

Command ==> Scroll ==> CSR

*MXIG2

Ready (1) 192.168.55.22 TN3270/E 15:28:02 7/22/2010 NUM 00:21:44 26,015

zFS Information

RS22
_ _ X

File Edit Session Options Transfer View Macro Script Help

File	PlugIn	Dataset	Module	Unit	System	Sysplex	SMS	Storage	WLM	
MKI--HFS--RS22-----HOME-----CPU 1 UIC 65535 PAG 24-----<==> Row 00001 of 00241										
Path =*										
Cmd	Path	Uolser	AutoMove	BlkSize	TotlBlks	Status	FreeBlks	Files	UsedBlks	
/		MCP100	Yes	4096	180	Active	14	73	136	
/service		TSP10E	Yes	4096	17460	Active	15275	150	2157	
/service/rsusr/db2		S1P103	Yes	4096	1476	Active	1400	18	45	
/service/rsusr/db2/db2a10		S1P111	Yes	4096	9000	Active	2155	106	6815	
/tools_common			Yes	512	70018322	Active	29376448	232819	40641874	
/RS22		HFP100	No	4096	180	Active	150	10	13	
/RS22/dev		HFP100	No	4096	564	Active	461	855	78	
/RS22/etc		HFP100	No	4096	6684	Active	87	1439	6575	
/RS22/tmp			No	4096	230400	Active	230198	202	202	
/RS22/var		HFP100	No	4096	22128	Active	14952	329	7151	
/RS22/var/wbem			Yes	1024	108000	Active	88635	1853	19365	
/muscvs			Yes	512	99859240	Active	1131175712	0	1990190520	
/tools			Yes	512	70018322	Active	29376448	232819	40641874	
/proj			Yes	4096	1	Active	0	0	1	
/proj/cqm22		H2P11E	Yes	4096	98772	Active	30086	5800	68655	
/proj/CWQ		H2P11E	Yes	4096	306900	Active	110670	6061	196190	
/proj/AJC			Yes	1024	931680	Active	353637	45177	578043	
/proj/aspp		H2P11D	Yes	4096	30600	Active	4396	820	26181	
/proj/DBCure		H2P11C	Yes	4096	50304	Active	9061	2062	41223	
Command	===>								Scroll	===> CSR
*MKIG2										

Ready (1)	192.168.55.22	TN3270/E	15:28:24 7/22/2010	NUM	00:22:06	26,015
-----------	---------------	----------	--------------------	-----	----------	--------

Storage Management Plug-in



Post-processes DCOLLECT SMF records

Job must be run periodically (nightly?)

Essentially a data-mining application

Eliminates the need for other tools to process DCOLLECT data

Storage Management Plug-in

S1 - RS21 - RS21 - BlueZone Mainframe Display

File Edit Session Options Transfer View Macro Script Help

Connections: RS21 Attention PA1 PA2 PA3 Reset PF01 PF02 PF03 PF04 PF05 PF06 PF07 PF08 PF12 System Request

File PlugIn Dataset Module Unit System Sysplex SMS Storage WLM

MXI--MENU-RS21-----HOME-----CPU 4 UIC 65535 PAG 0-----Row 00039 of 00161

Command ==> _____ Scroll ==> PAGE

Detail Y

MXI Version 5.2 Genlevel 091014

Command	Comment	Group
DMDS BLKSIZE(>27998)	Datasets With Large Block Size	DCM
DMDS DSORG(VS) XT(>100)	VSAM Dataset In Many Extents	DCM
DMMC	Dataset Summary By Mangmnt Class	DCM
DMQ	Dataset Summary By HLQ	DCM
DMQ EMPTY(>0) SORT(EMPTY,D)	Empty Datasets	DCM
DMQ LARGE(>0) SORT(LARGE,D)	Large Datasets	DCM
DMQ MONTH(>0) SORT(MONTH,D)	Datasets Unreferenced For Month	DCM
DMQ MULTIVOL(>0) SORT(MULTIVOL,D)	Multi-Volume Datasets	DCM
DMQ SMALL(>0) SORT(SMALL,D)	Small Datasets	DCM
DMQ WEEK(>0) SORT(WEEK,D)	Datasets Unreferenced For Week	DCM
DMQ YEAR(>0) SORT(YEAR,D)	Datasets Unreferenced For Year	DCM
DMS	Dataset Summary By Scope	DCM
DMSC	Dataset Summary By Storage Class	DCM
DMSG	Dataset Summary By Storage Group	DCM
DMV	Dataset Summary By Volser	DCM
DMV SMS(NO)	Non-SMS Volumes	DCM

*MXIG2

S1 | Ready (1) | 192.168.55.21 | S21TCP42 | 10:00:41 2/22/2011 | NUM | 00:16:21 | 04.015

Storage Management Plug-in

S1 - RS21 - RS21 - BlueZone Mainframe Display

File Edit Session Options Transfer View Macro Script Help

Connections: RS21 Attention PA1 PA2 PA3 Reset PF01 PF02 PF03 PF04 PF05 PF06 PF07 PF08 PF12 System Request

File PlugIn DCollect DASD SMS

MXI - Select Command

Command ==> _____ Row 1 to 13 of 13 01 of 01457
 ==> PAGE

S	Command	Description			
—	DMDS	Show Datasets For HLQ			
—	EMP	Show Empty Datasets			MaxK L
—	ERR	Show Datasets In Error			8611
—	LDS	Show Large Datasets For HLQ			9699
—	LRM	Datasets Unreferenced For Month			2038
—	LRW	Datasets Unreferenced For Week			1817
—	LRY	Datasets Unreferenced For Year			8260
—	MVOL	Show Multi-Volume Datasets			7904
—	NEW	Datasets Less Than 3 Days Old			5407
—	NULL	Show Datasets With Null Dsorg			6679
—	S	High Level Qualifier Summary			0513
—	SDS	Show Small Datasets For HLQ			6007
—	VS	Show VSAM Datasets For HLQ			6182
					5407
					8299
					5967
					7835
					91858
					64847
					70
					2766797
					6008
					3465
					1944
					56
					81510

HLQ =*
 Null >=0
 Cmd HLQ
 !TOTAL
 HSMMIG
 E81B
 ? FTRRC8T
 FTRRC8S
 FTRQTRG9
 FTRQTRG8
 RSQA
 FTRRC9S
 RSTEST
 FTRQSRC9
 FTRQSRC8
 DDS2
 FTRRC9T
 SYS1
 EA1A

*MXIG2

S1 | Ready (1) | 192.168.55.21 | S21TCP42 | 10:13:51 2/22/2011 | NUM | 00:29:31 | 03.031

Storage Management Plug-in

S1 - RS21 - RS21 - BlueZone Mainframe Display

File Edit Session Options Transfer View Macro Script Help

Connections: RS21 Attention PA1 PA2 PA3 Reset PF01 PF02 PF03 PF04 PF05 PF06 PF07 PF08 PF12 System Request

File PlugIn DCollect DASD SMS

MXI--DMDS-RS21-----HOME-----CPU 2 UIC 65535 PAG 0----->-Row 00401 of 16564

Command ==> Scroll ==> PAGE

Dataset =FTRRC8T.* Volser =*

Scope =* SGRP =* Date 2010/08/23 13.14.21

Cmd	Dataset	Volser	DaysRef	SGRP	Use%
	FTRRC8T.DSNDBD.FTRQ81KM.XFMPT1##.I0001.A326	FTP107	543	FTRG2	100
	FTRRC8T.DSNDBD.FTRQ81KM.XFMPT1##.I0001.A327	FTP111	543	FTRG2	100
	FTRRC8T.DSNDBD.FTRQ81KM.XFMPT1##.I0001.A328	FTP10F	543	FTRG2	100
	FTRRC8T.DSNDBD.FTRQ81KM.XFMPT1##.I0001.A329	FTP10A	543	FTRG2	100
	FTRRC8T.DSNDBD.FTRQ81KM.XFMPT1##.I0001.A330	FTP111	543	FTRG2	100
	FTRRC8T.DSNDBD.FTRQ81KM.XFMPT1##.I0001.A331	FTP116	543	FTRG2	100
	FTRRC8T.DSNDBD.FTRQ81KM.XFMPT1##.I0001.A332	FTP116	543	FTRG2	100
	FTRRC8T.DSNDBD.FTRQ81KM.XFMPT1##.I0001.A333	FTP116	543	FTRG2	100
	FTRRC8T.DSNDBD.FTRQ81KM.XFMPT1##.I0001.A334	FTP10F	543	FTRG2	100
	FTRRC8T.DSNDBD.FTRQ81KM.XFMPT1##.I0001.A335	FTP116	543	FTRG2	100
	FTRRC8T.DSNDBD.FTRQ81KM.XFMPT1##.I0001.A336	FTP10D	543	FTRG2	100
	FTRRC8T.DSNDBD.FTRQ81KM.XFMPT1##.I0001.A337	FTP10A	543	FTRG2	100
	FTRRC8T.DSNDBD.FTRQ81KM.XFMPT1##.I0001.A338	FTP10D	543	FTRG2	100
	FTRRC8T.DSNDBD.FTRQ81KM.XFMPT1##.I0001.A339	FTP10F	543	FTRG2	100
	FTRRC8T.DSNDBD.FTRQ81KM.XFMPT1##.I0001.A340	FTP10D	543	FTRG2	100
	FTRRC8T.DSNDBD.FTRQ81KM.XFMPT1##.I0001.A341	FTP10F	543	FTRG2	100

*MXIG2

S1 | Ready (1) | 192.168.55.21 | S21TCP42 | 10:04:06 2/22/2011 | NUM | 00:19:46 | 04.015

DB2 Plug-in Features



Display DB2 subsystem statistics, configuration version and data sharing information

Display DB2 thread statistics and activity information

Display the SQL statement (static or dynamic) being executed by the thread

Issue DB2 commands easily to the required subsystem without knowing the command prefix

Cancel DB2 threads

Can rebuild ZPARMs when used with the VI command

CAE: More Than Just a GUI



Historical analysis/viewing

Notifications (email, WTO)

Multi-system View

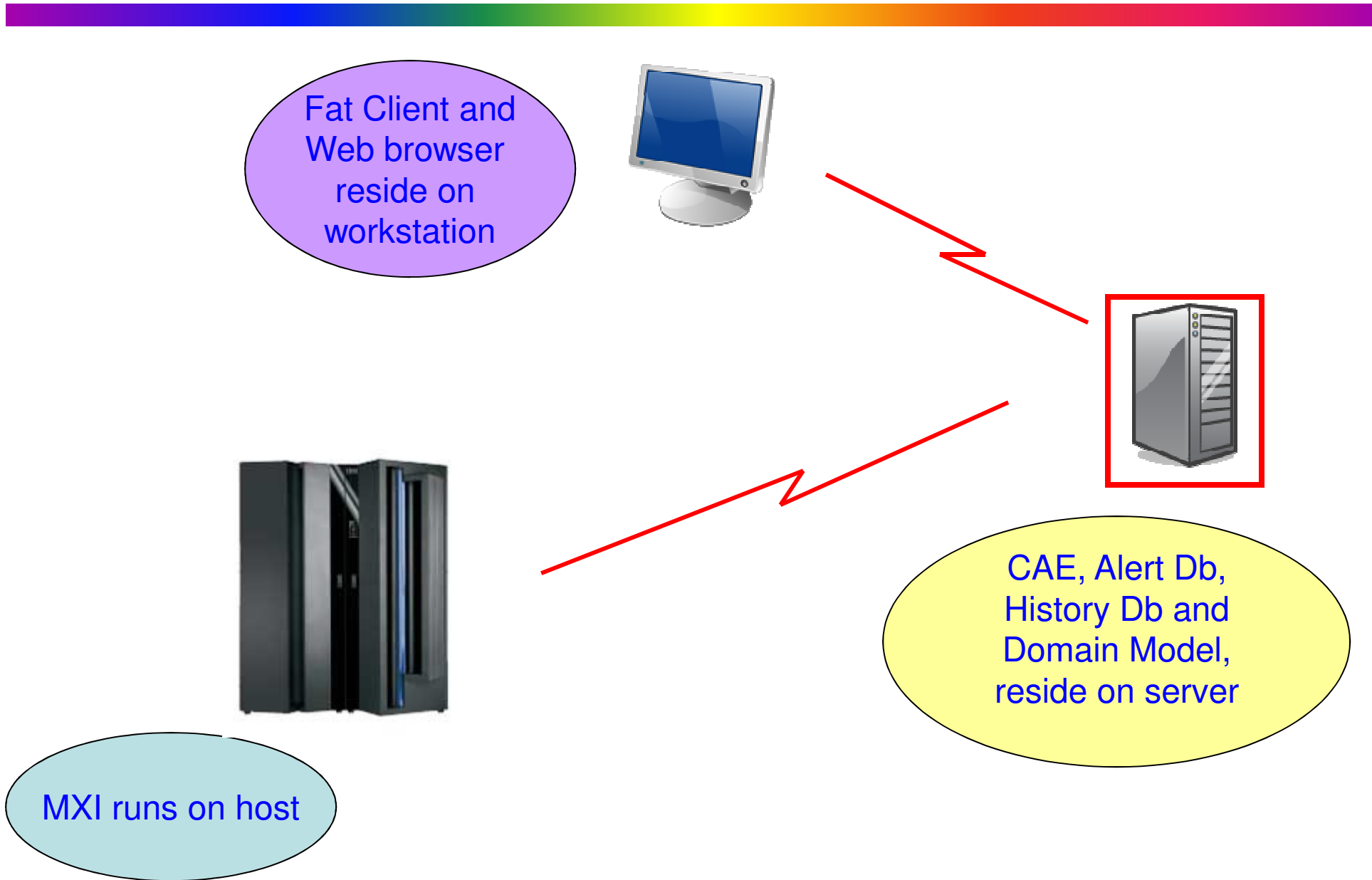
Web Dashboards

Full MXI command coverage, including all Plug-ins

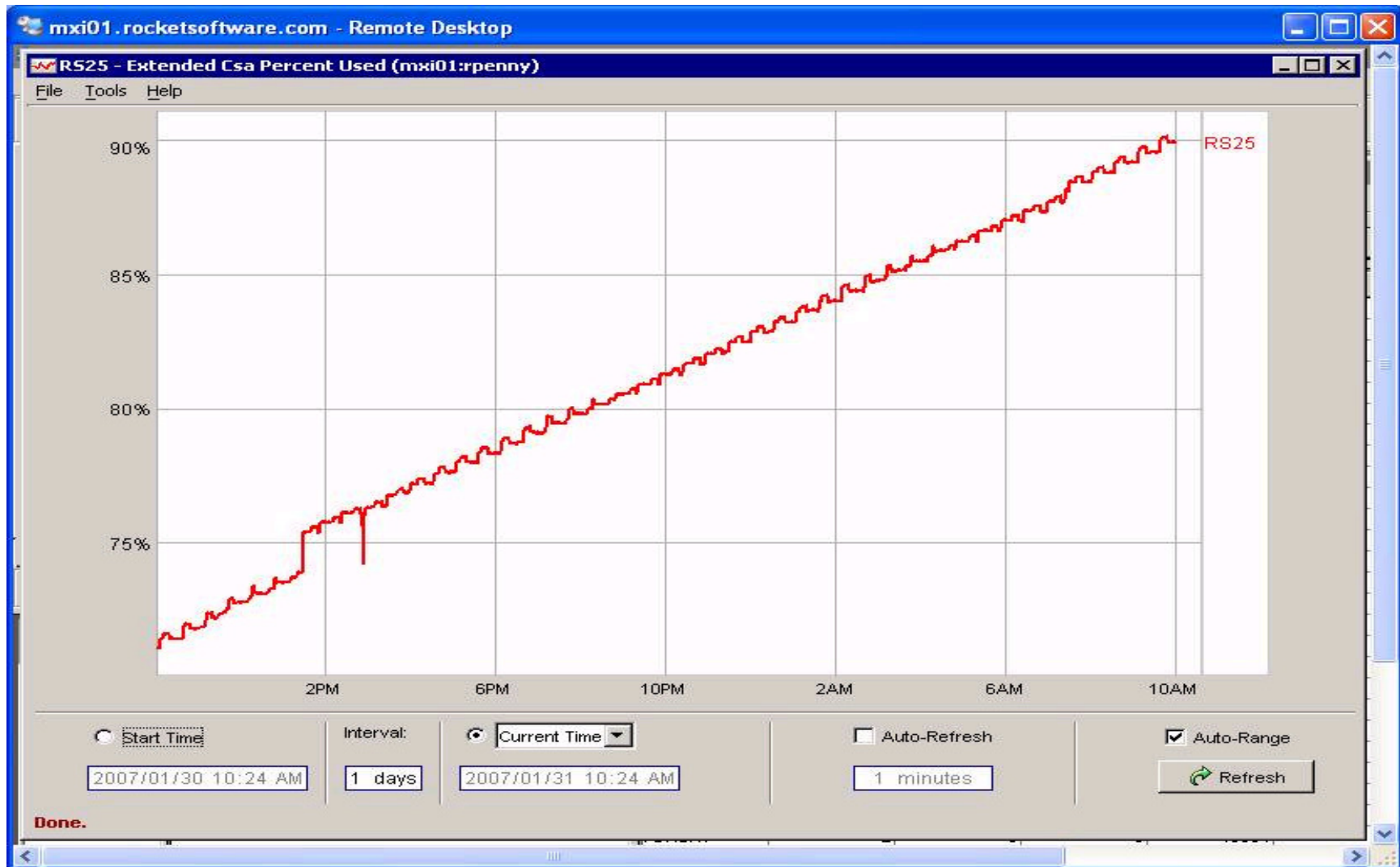
Robert Penny - CAE Author



CAE Architecture



Real World CSA Growth



Web Dashboards

